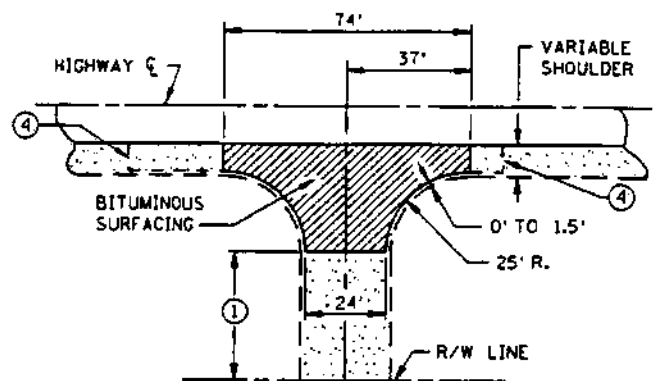
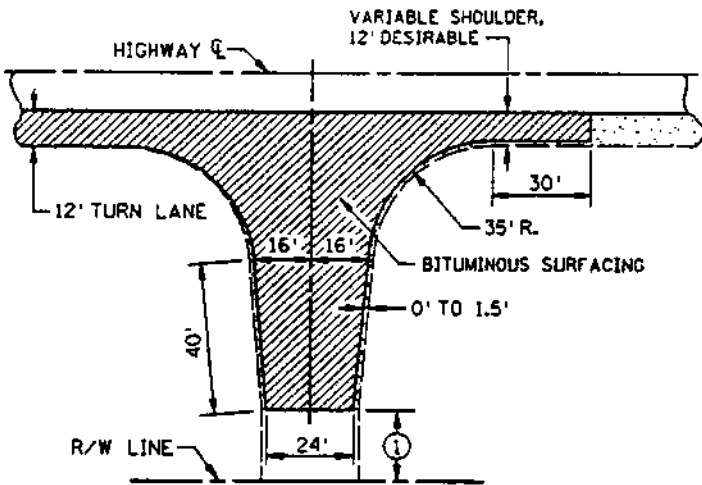


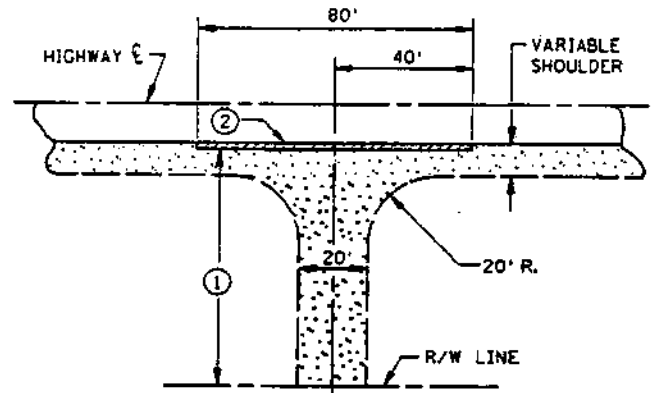
COMMERCIAL - INDUSTRIAL - FARM ENTRANCES



RURAL RESIDENTIAL ENTRANCE

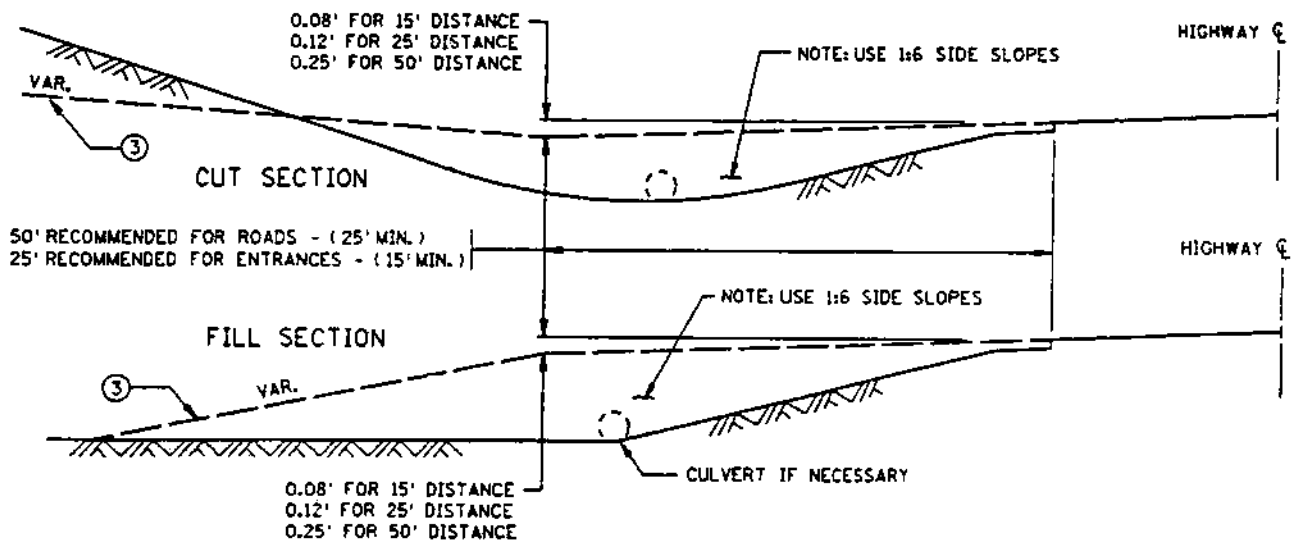


LOW VOLUME ROAD



FIELD ENTRANCES

- ① SURFACING TO MATCH EXISTING CONDITIONS. WHERE THERE IS NO SURFACING, PLACE GRAVEL BEYOND BITUMINOUS SURFACING TO R/W LINE.
- ② PLACE 2 FT. WIDE BITUMINOUS SURFACING AS DIRECTED BY ENGINEER.
- ③ 8% MAXIMUM COMMERCIAL; 15% MAXIMUM RESIDENTIAL.
- ④ THE USE OF PAVING SIMILAR TO COMMERCIAL ENTRANCES MAY BE APPROPRIATE FOR SOME RESIDENCES. AS SHOWN IN PLANS OR DIRECTED BY THE ENGINEER.



CROSS SECTIONS

APPROVED NOVEMBER 1, 2000

*Belbert W. Gunders*  
STATE DESIGN ENGINEER

STATE OF MINNESOTA  
DEPARTMENT OF TRANSPORTATION

APPROACHES AND ENTRANCES  
RECOMMENDED STANDARDS

SPECIFICATION  
REFERENCE

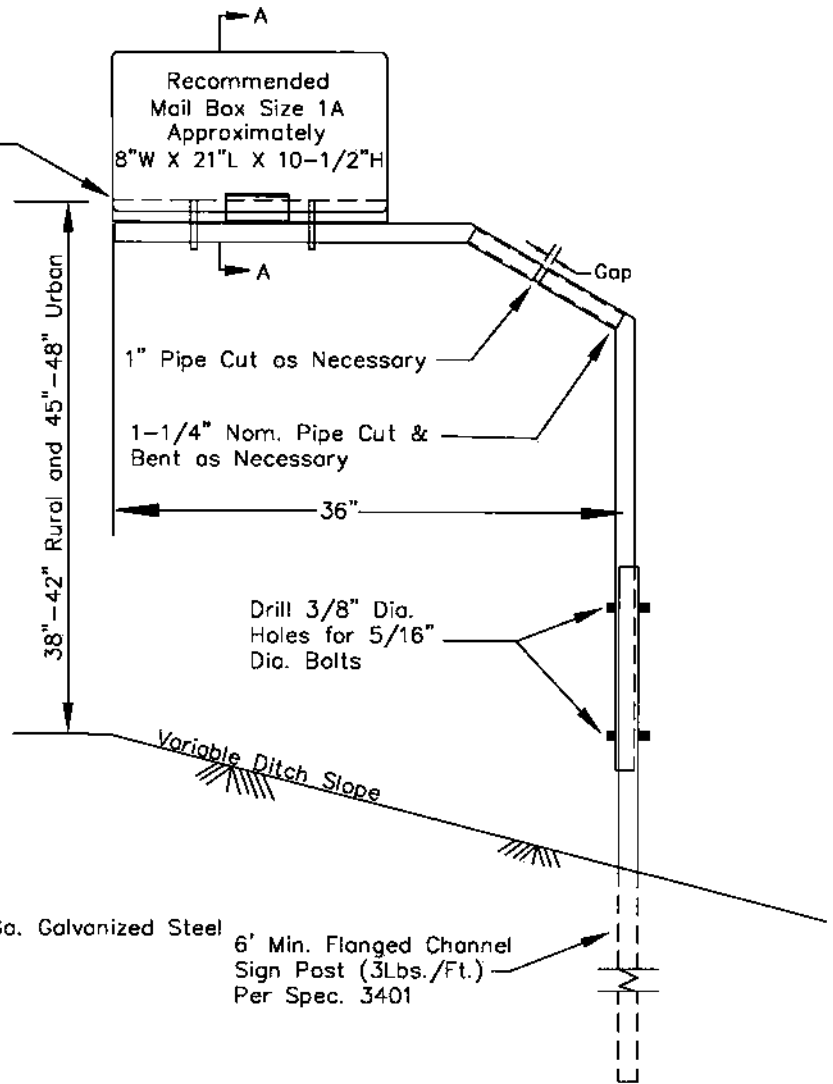
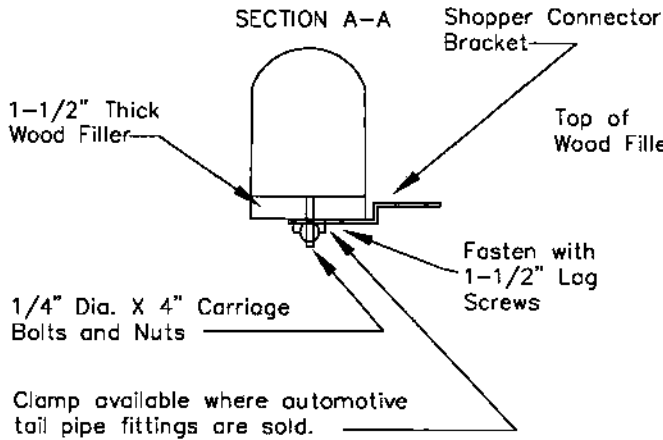
REVISED  
5-19-2001 A.K.J.

STANDARD  
PLATE  
NO.

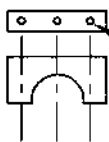
9000D

# MAILBOX SUPPORT

STEEL PIPE WITH FITTINGS AND STEEL FENCE POST  
(SINGLE SUPPORT)

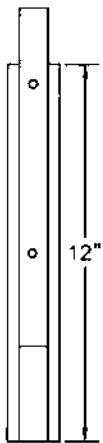


## TAIL PIPE CLAMP DETAIL



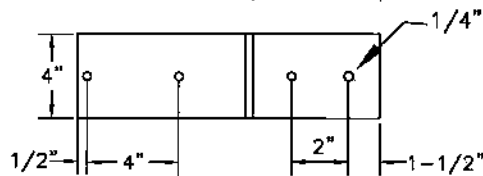
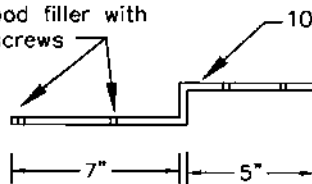
Drill 5/16" Dia. holes for 1/4" dia. carriage bolts

## PIPE/POST CONNECTION



## SHOPPER CONNECTOR BRACKET

Fasten to wood filler with 1-1/2" log screws



## NOTES:

All pipe & pipe fittings shall conform to Spec. 3362

All fasteners shall conform to Spec. 2291

All materials shall be galvanized per Spec. 3392

Mail Box locations should be staked before installation for proper height & distance from the roadway. Once staked, the installer must notify the Engineer and the post office, the Engineer and Postmaster/Mailcarrier will be allowed 48 hrs. to review and modify the staked locations prior to final installations.

The mailbox to be 8 inches to 12 inches outside the edge of shoulder or 6 inches to 12 inches from face of curb.

Shopper Connection Bracket is to be installed away from the traffic flow wherever practical.

## LIST OF MATERIALS FOR CONTRACTORS

ITEM NO.	DESCRIPTION
1	1-1/2" Thick wood filler cut to fit.
2	1/4" Dia. X 4" long carr. bolts & nuts
3	1-1/4" Nominal pipe cut to fit.
4	6 Ft. min. sign post (3 lbs./ft.)
5	5/16" Dia. bolts, nuts, & lockwashers
6	1-1/2" Tail pipe clamp
7	No. 10 X 1" Sheet metal screws.
8	4" X 7" 10 Ga. Gal. Steel Bracket
9	1-1/2" Log screws